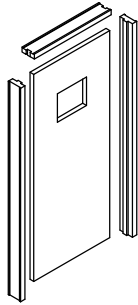


CP3 FIRE SINGLE DOOR



Style 1, 2, 4, 4.4 & 11 Knock Down Door & Frame By Chem-Pruf®

UL 10 (C) Fire Rated Category A & B

Note: Fire Rated Doors must be installed per these instructions and NFPA #80.

Trimming for height may be done only on the bottom rail up to a maximum of 3/4 inch with permission in writing from Chem-Pruf.

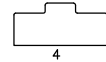
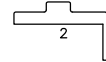
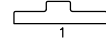
Surface mounted hardware must be attached with through-bolts.

Category "A" doors are labeled "This door has been labeled for compliance with UBC 7-2-1997 (Positive Pressure) and does not require the application of an additional edge sealing system." They are eligible to be used with any frame listed in Category "C".

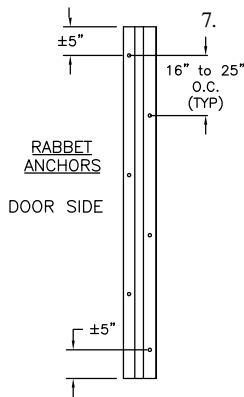
Category "B" doors require installation of an edge-sealing system listed in Category "G" and are eligible to be used with any frame listed in Category "C". Chem-Pruf Category "B" doors require Pemko HSS2000 Hot Smoke Seal to be applied per paragraph 12 of these instructions.

For doors with light cutouts, install only a light kit listed and labeled for compliance with UBC 7-2-97 for this type of door. Install the light kit per the light kit manufacturer's instructions and Fig. 4 attached.

1. Set the crate, which will be marked with the specific opening location, at the opening. Remove parts from crates & check for damage. Notify Chem-Pruf® 1-800-444-6924 if parts are missing.
2. Check plans for swing and location of jambs in structure. 4" minimum wall thickness.
3. Fasten jambs to header with 1/4" x 3" stainless steel lag bolts/screws in pre-drilled holes in jambs and header. Check marks on header and jambs.
4. Carefully raise jamb assembly into opening. Place spanner between jamb legs at floor.
5. Plumb jambs and level header - use shims to hold in place.
6. Frame shall be tightly shimmed at each hinge location and at each frame screw. (Frame screws are provided with frame.) Two (2) beads of fire-rated caulking compound shall be injected behind each jamb member after setting frame in rough opening. In addition to frame screws through field drilled holes, one stainless steel frame screw shall replace one hinge screw at each hinge location and two 1/4x4 screws through the strike for single swing door frames.



Note: Hinge and strike counter sink must be deepened for Crete-Flex. Set frame with supplied anchors. Field drill 1/4" hole into frame and counter sink all holes 82°, so anchor head will be flush with frame. Place anchors so that they penetrate solid structure. Use desired method listed below.



7. Use desired anchoring method. Counter sink all holes 82 degrees so fastener head will be flush with frame.

- a. **CMU - Recommended Method 1/4 x 4" Crete-Flex Rabbet Anchors** - Field drill 1/4" hole in both jamb rabbets. Drill 2" into solid structure with a 7/32" X 4" long masonry bit, only. Place fastener 5" or 6" from each end of jamb and as shown on drawing #1. Drill for balance of anchors at 16" o.c. staggered in rabbets.
- b. **Metal/Wood - (#14 Sheet Metal Screws)**
Same as above except field drill pilot hole for supplied screws. Use #12 stainless steel screw to replace one hinge screw at each hinge & 2 #12 stainless steel screw through strike.
- c. **Steel - (1/4"-20 Machine Screws)**
Same as "b" except field drill & tap steel structure 1/4-20 to accept supplied screws.

O.K. TO RELEASE MANAGEMENT: _____ DATE: _____
 PRODUCTION: _____ DATE: _____
 COST CONTROL: _____ DATE: _____

NO PART OF THIS DRAWING MAY BE REPRODUCED, STORED IN A RETRIEVAL SYSTEM, OR TRANSMITTED IN ANY FORM OR BY ANY MEANS, ELECTRONIC, MECHANICAL, PHOTOCOPYING, RECORDING OR OTHERWISE, WITHOUT THE PRIOR WRITTEN CONSENT OF CHEM-PRUF® DOOR CO., LTD.

THE DATA CONTAINED IN THIS PUBLICATION IS FOR THE CONFIDENTIAL USE OF THE PURCHASER ONLY. THIS DATA IS NOT TO BE SOLD OR OTHERWISE PROVIDED TO THIRD PARTIES IN ANY FORM.

© COPYRIGHT CHEM-PRUF® DOOR CO., LTD. 2005
 U.S. PATENT #'S 4374693, 4429498, 5072561



P.O. BOX 4560 BROWNSVILLE, TX 78523
 1-800-444-6924 / FAX: (956) 544-7943
 www.chem-pruf.com

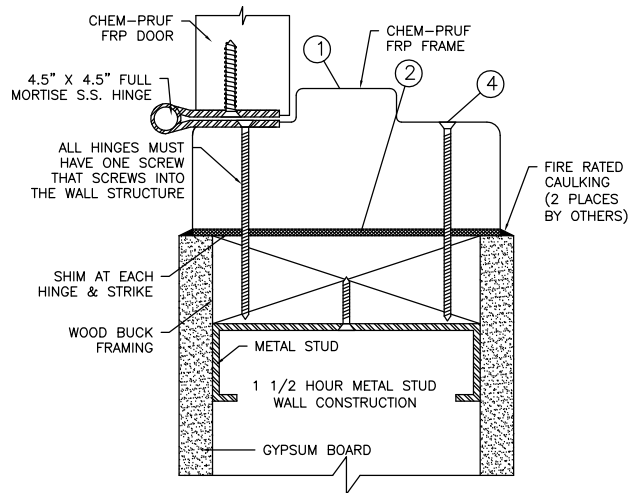
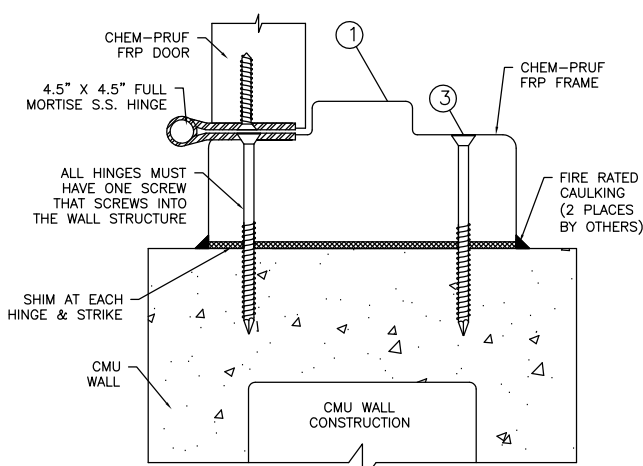
STYLE 1,2,4,5,6, & 11 KNOCKED DOWN
 DOOR AND FRAME BY CHEM-PRUF®
 (FIRE RATED)

DWG. NO:	INSTALLATION INSTRUCTIONS 14-4	PAGE:	1 OF 2
SCALE	DWN BY	REV. #	DATE
N.T.S.	MDC	7	06/17/08

8. Apply small amount of silicone under each counter sunk anchor and snug up. Shim as necessary to hold, plumb and level.
9. Remove spanner.
10. Hang door. Be sure match marks all agree on door.
11. Adjust shims and anchors, if necessary, to maintain clearances.
12. Category "B" doors require field applied seal. Install per manufacture's instructions. Pemko HSS2000 Hot Smoke Seal shall be applied to door frame jambs, top of door or doors, and meeting edges of door pairs per instructions enclosed with seal. Doors pairs require two strips of seal vertically at meeting edges. Offset seal so it will not interfere with closing of the active door.
13. Caulk as specified by NFPA #80. (Recommended intumescent caulk 3m CP 25 NS)
14. Install accessories if required. If field installing mortise type latch set, wrap with 1/16" ceramic insulation supplied.
15. Depending on conditions it may be necessary to shim hinge leaves to maintain required 1/8" door to jamb clearance. Adjust as required so doors swing freely without binding.

List of Materials & Tools Required

1. Silicone
2. 7/32" X 4" long Masonry Bit (For Block / Concrete Walls Only)
3. 1/4" Drill Bit
4. Countersink Drill Bit
5. Fire Rated Caulking
6. PEMKO HSS 2000 Hot Smoke Seal (Cat B. Doors Only)



BILL OF MATERIAL

#	DESCRIPTION	#	DESCRIPTION
1	FRAME MATERIAL SPECS	3	3 3/4" CRETE-FLEX
2	CAULK MATERIAL	4	3 3/4" #10 SHEETMETAL SCREW

O.K. TO RELEASE MANAGEMENT: _____ DATE: _____
 PRODUCTION: _____ DATE: _____
 COST CONTROL: _____ DATE: _____

NO PART OF THIS DRAWING MAY BE REPRODUCED, STORED IN A RETRIEVAL SYSTEM, OR TRANSMITTED IN ANY FORM OR BY ANY MEANS, ELECTRONIC, MECHANICAL, PHOTOCOPYING, RECORDING OR OTHERWISE, WITHOUT THE PRIOR WRITTEN CONSENT OF CHEM-PRUF® DOOR CO., LTD.

THE DATA CONTAINED IN THIS PUBLICATION IS FOR THE CONFIDENTIAL USE OF THE PURCHASER ONLY. THIS DATA IS NOT TO BE SOLD OR OTHERWISE PROVIDED TO THIRD PARTIES IN ANY FORM.

© COPYRIGHT CHEM-PRUF® DOOR CO., LTD. 2005
 U.S. PATENT #'S 4374693, 4429498, 5072561



P.O. BOX 4560 BROWNSVILLE, TX 78523
 1-800-444-6924 / FAX: (956) 544-7943
 www.chem-pruf.com

STYLE 1,2,4,5,6, & 11 KNOCKED DOWN
 DOOR AND FRAME BY CHEM-PRUF®
 (FIRE RATED)

DWG. NO: INSTALLATION INSTRUCTIONS 14-4		PAGE: 2 OF 2	
SCALE	DWN BY	REV. #	DATE
N.T.S.	MDC	7	06/17/08