



Any Size! Any color! No corrosion/rust!

Chem-Pruf®
 P.O. Box 4560 Brownsville, TX 78523
 Phone: 1-800-444-6924
 Fax: 956/544-7943
 E-mail: info@chem-pruf.com

SARGENT

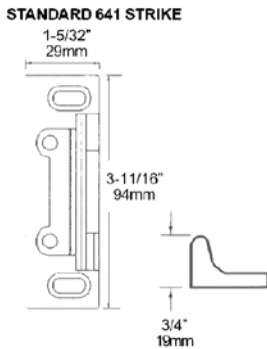
PANIC DEVICE

8810 EO US32D Rim Exit Device



FEATURES & CERTIFICATIONS

- Push bar type exit device
- Chassis cover: Stainless Steel
- Chassis: Nonferrous alloy
- Rail assemblies and end caps are stainless steel
- Stainless steel springs throughout
- High impact resistant Lexan touch pad on rail assembly
- Maximum 3" (77mm) projection, minimum 2 1/8" (54mm) push side
- Chassis mounted unit construction for easy installation and service
- Exit device meets ANSI standard 156.3, Grade 1
- Handed- specify RHR or LHR



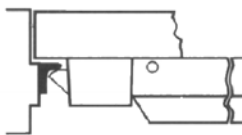
TRIM DESIGN & FUNCTION

- EO (exit only)
- Function 10- No outside operation.

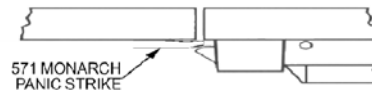
STRIKE: 641

- Standard strike
- Surface applied

SINGLE DOOR



DOUBLE DOOR



571 MONARCH FOR DOUBLE DOOR RIM PANIC DEVICES

